

Loft Apartments

- Approximately 780 square feet
- In-unit washer and dryers
- Fully equipped kitchens
- Controlled access entry
- Underground garage*
- Pet friendly
- Bike storage
- Wi-Fi and high-speed internet access*
- Cable TV and local phone*
- 9'-14' Ceilings
- Ample windows
- All units acoustically designed
- Mt. Rainier and territorial views**
- Pergo floors in most kitchens
- European style designer cabinets and lighting
- Private terraces**
- Community plaza
- Large closets / ample in-unit storage

* Cost is not included in monthly rent

** In select apartments only

Note: Unit layout may vary depending on floor

Contact Us:

Saxe Apartments in Ravenna

2402 NE 65th Street

Seattle, Washington 98115

Phone: 206-527-7293

Web: www.saxeapts.com

Email: info@saxeapts.com

Personal Tour:

Unit: _____

Date Viewed: _____

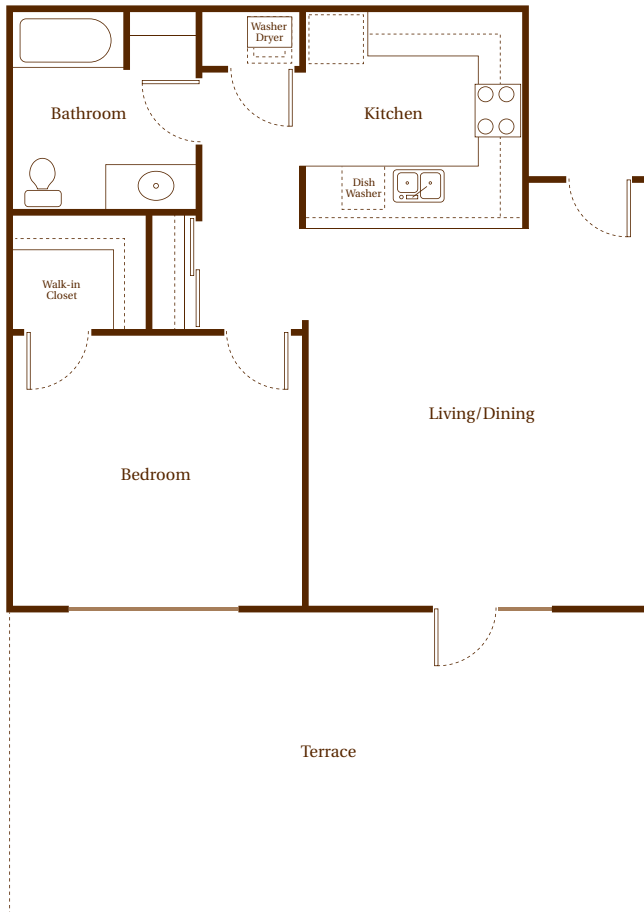
Square Feet: _____

Price: _____

Deposits: _____

Estimated Utilities: _____





1 Bedroom/1 Bath Units

- Approximately 795 square feet
- In-unit washer and dryers
- Fully equipped kitchens
- Controlled access entry
- Underground garage*
- Pet friendly
- Bike storage
- Wi-Fi and high-speed internet access*
- Cable TV and local phone*
- 9'-14' Ceilings
- Ample windows
- All units acoustically designed
- Mt. Rainier and territorial views**
- Pergo floors in most kitchens
- European style designer cabinets and lighting
- Private terraces**
- Community plaza
- Large walk-in closets / ample in-unit storage

* Cost is not included in monthly rent

** In select apartments only

Note: Unit layout may vary depending on floor

Contact Us:

Saxe Apartments in Ravenna
 2402 NE 65th Street
 Seattle, Washington 98115
 Phone: 206-527-7293
 Web: www.saxeapts.com
 Email: info@saxeapts.com



Personal Tour:

Unit: _____

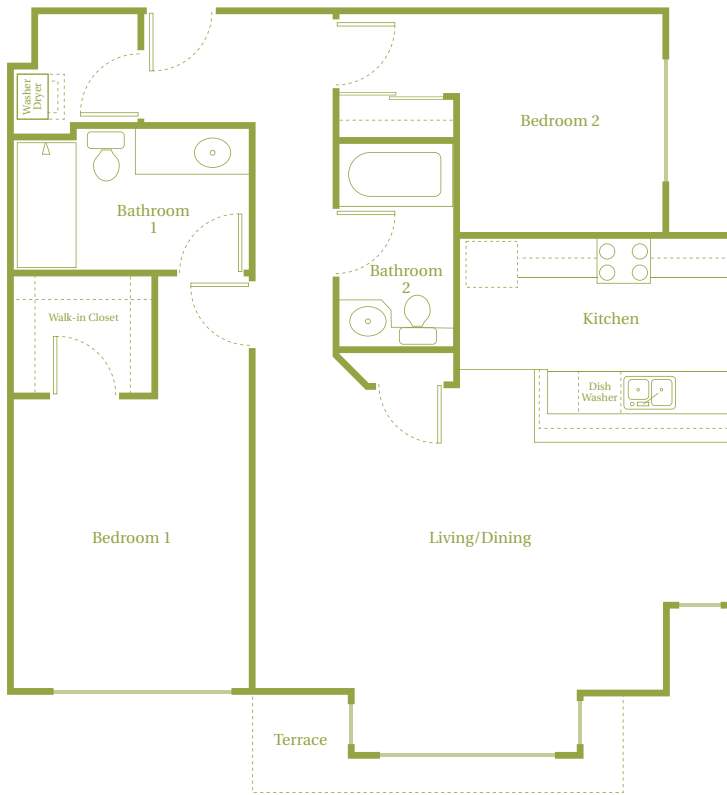
Date Viewed: _____

Square Feet: _____

Price: _____

Deposits: _____

Estimated Utilities: _____



2 Bedroom/2 Bath Units

- Approximately 1,015 square feet
- In-unit washer and dryers
- Fully equipped kitchens
- Controlled access entry
- Underground garage*
- Pet friendly
- Bike storage
- Wi-Fi and high-speed internet access*
- Cable TV and local phone*
- 9'-14' Ceilings
- Ample windows
- All units acoustically designed
- Mt. Rainier and territorial views**
- Pergo floors in most kitchens
- European style designer cabinets and lighting
- Private terraces**
- Community plaza
- Large walk-in closets / ample in-unit storage

* Cost is not included in monthly rent

** In select apartments only

Note: Unit layout may vary depending on floor

Contact Us:

Saxe Apartments in Ravenna

2402 NE 65th Street

Seattle, Washington 98115

Phone: 206-527-7293

Web: www.saxeapts.com

Email: info@saxeapts.com

Personal Tour:

Unit: _____

Date Viewed: _____

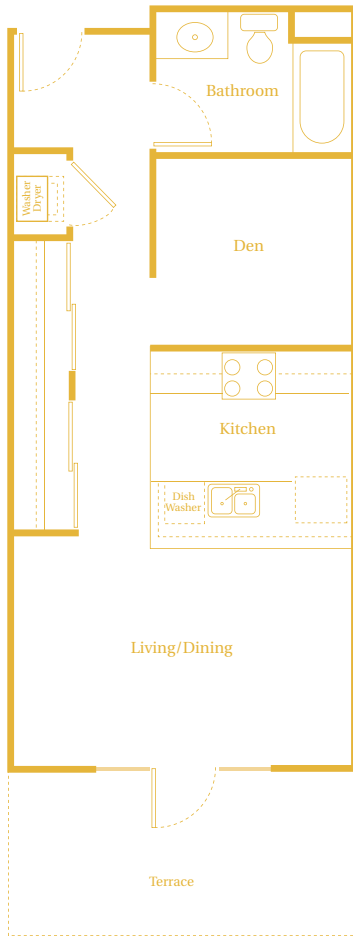
Square Feet: _____

Price: _____

Deposits: _____

Estimated Utilities: _____





Contact Us:

Saxe Apartments in Ravenna
 2402 NE 65th Street
 Seattle, Washington 98115
 Phone: 206-527-7293
 Web: www.saxeapts.com
 Email: info@saxeapts.com

Alcove Studio Units

- Approximately 565 square feet
- In-unit washer and dryers
- Fully equipped kitchens
- Controlled access entry
- Underground garage*
- Pet friendly
- Bike storage
- Wi-Fi and high-speed internet access*
- Cable TV and local phone*
- 9'-14' Ceilings
- Ample windows
- All units acoustically designed
- Mt. Rainier and territorial views**
- Pergo floors in most kitchens
- European style designer cabinets and lighting
- Private terraces**
- Community plaza
- Large closets / ample in-unit storage

* Cost is not included in monthly rent

** In select apartments only

Note: Unit layout may vary depending on floor

Personal Tour:

Unit: _____

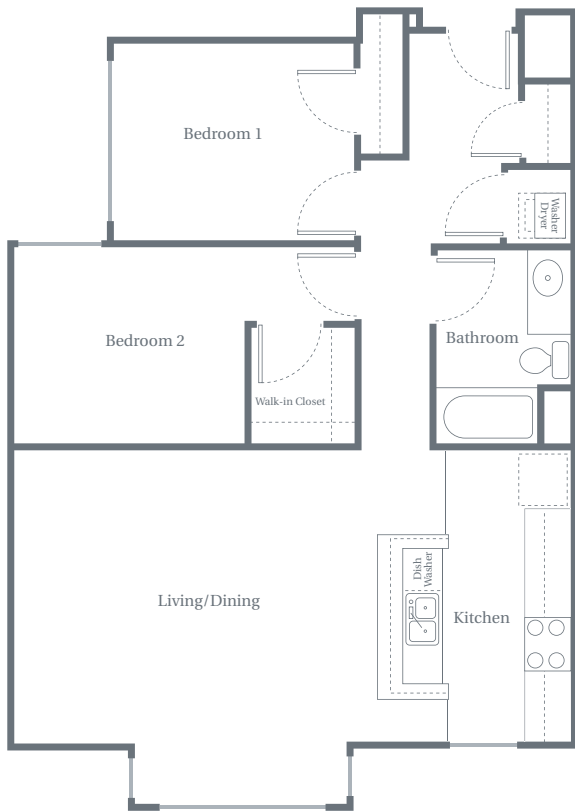
Date Viewed: _____

Square Feet: _____

Price: _____

Deposits: _____

Estimated Utilities: _____



2 Bedroom/1 Bath Units

- Approximately 910 square feet
- In-unit washer and dryers
- Fully equipped kitchens
- Controlled access entry
- Underground garage*
- Pet friendly
- Bike storage
- Wi-Fi and high-speed internet access*
- Cable TV and local phone*
- 9'-14' Ceilings
- Ample windows
- All units acoustically designed
- Mt. Rainier and territorial views**
- Pergo floors in most kitchens
- European style designer cabinets and lighting
- Private terraces**
- Community plaza
- Large closets / ample in-unit storage

* Cost is not included in monthly rent

** In select apartments only

Note: Unit layout may vary depending on floor

Contact Us:

Saxe Apartments in Ravenna

2402 NE 65th Street

Seattle, Washington 98115

Phone: 206-527-7293

Web: www.saxeapts.com

Email: info@saxeapts.com

Personal Tour:

Unit: _____

Date Viewed: _____

Square Feet: _____

Price: _____

Deposits: _____

Estimated Utilities: _____

